

# GRANITE PRECISION INC.

*Advancing Technology in the Entertainment Industry*

## Interactive Museum Booth



*The IMS in a medium configuration*

### The Interactive Museum Booth

- Utilizes Granite Precision's Integrated Media Server
- Transportable
- Flexible
- Allows a variety of display technologies
- Reconfigured in minutes



GRANITE PRECISION INC.

150148 1/2 Delano St.  
Van Nuys, CA 91504

Phone: 661.977.9729

Fax: 661.977.9729

Email: [sales@graniteprecision.com](mailto:sales@graniteprecision.com)

The Interactive Museum Booth™ (IMB) by Granite Precision is an entirely new way of demonstrating educational material to the museum-going public. The key to its differentiation to other interactive display products is in the flexibility of the Integrated Media Server (IMS).

#### **Built-in Resources, Control of External Resources, Hyper-accuracy**

The IMS architecture is built upon an advanced field-accurate (1/60 of a second) show controller, and logically separates that controller from the resources it commands (such as audio, video, and lighting sources). These resources can then be integrated into the system via a wide variety of available peripheral interface cards, or the unit can be configured with traditional serial, discrete I/O, and Ethernet ports to control external equipment. By enabling both an integrated and "black box" approach to show control design, the IMS architecture affords incredible creative and practical flexibility.

Available integrated resource peripherals include broadcast quality SD or HD video playback with optional On-Screen Display, broadcast quality digital audio, DMX lighting control, discrete, and even animation. Plus, all resources are always field-accurate, across the board, via internal or external Genlock. With the IMS, Stability, Accuracy and Error Detection are paramount.

#### **Transportability**

The IMB is unlike any other museum display system. It can be broken down into six sections within minutes, transported to a new location and set up again.

#### **Flexibility**

The IMB allows for a variety of display systems, depending on the needs of the attraction. It can be assembled as a half-high 3 panel wide system, with a horizontal foamcore sign adorning the top, a full-high 4 panel wide system, with a vertical foamcore sign to the left or right, or a full-high full-wide 6 panel system for the needs of the largest display.

Each panel comes with adjustable shelving brackets on each side, allowing an almost limitless number of shelves (3 included in the standard package), Signage may be attached anywhere via Velcro™, and all wiring may be hidden beneath each shelf. The Integrated Media Server may be put on one of the shelves, hidden by a drapery (normally hung from a shelf), or it may be put behind the booth entirely. No system of this type is more flexible.

# GRANITE PRECISION INC .

15048 1/2 Delano St.  
Van Nuys, CA 91411  
(661) 977-9729  
www.graniteprecision.com



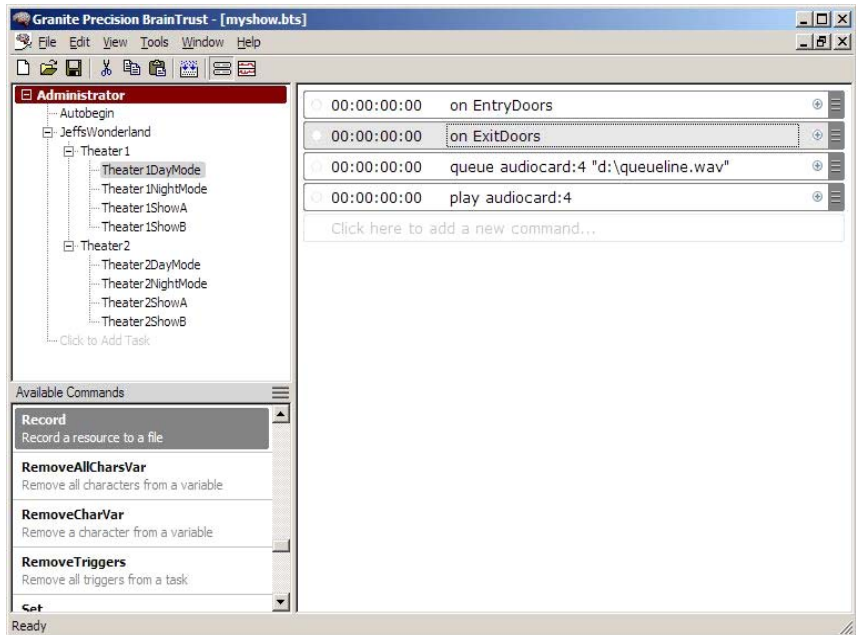
## Display Capabilities

The IMB has brackets for conventionally mounted television displays\*, up to one per panel.

## Programming

Programming of the IMS is easy with BrainTrust™. This software adapts to your skill level, and allows you to view and manipulate resources via either a traditional command-line interface or a more advanced timeline.

Synapse Console™ enables the creation and management of text/graphical elements within the IMS interface to enable local or remote museum operator control, audience voting, signage, and interactive kiosks. You can use it to display any graphical information, or playback animation or even video content. You can show vehicles on a ridepath in real-time, zoom-in on security cameras, etc.



*If you need a museum display system that is flexible, transportable, and cost-effective, call Granite Precision today.*

## Specifications:

**Integrated Media Server:** Standard 4U or 2U IMS with up to 12 modules each

**Panels:** All panels are 39" x 47 1/2" x 2 1/4" . All panels have a full 1" steel bar-stock frame.

**Top Panels:** Top panels have handles for transporting, and mounting on the bottom

**Bottom Panels:** Bottom panels have wheels welded to the back for transporting, extending the width to 4 1/4", and mounting on the top

**Shelving:** Shelving is 40 1/4" x 18 1/4" x 1/2"

The Standard IMB package includes 3 top panels, 3 bottom panels, and 3 shelves.

Custom IMB packages are available. Call us, and tell us your needs today!

